



Oklahoma Shakespeare in the Park

2920 Pasco, Oklahoma City, OK 73103 | (405) 235-3700 | okshakes.org

President

Jennifer Lamirand
Step toe & Johnson

Vice-President

Nathan Hendrix
True-Façade

Secretary

Lindsey Sparks
American Fidelity

Treasurer

Robin Robinson
*Oklahoma
Education Assoc.*

Board of Directors

Ruth Cervantes
Arvest Bank

Beth Phillips
Paycom

Dillon Rasberry
Edmond Schools

Bob Wright
Applied Medical

Exec. Director
Kathryn McGill

Exec. Producer
Tyler Woods

Operations Mgr.
Henri Bailey

okshakes.org

Oklahoma Shakespeare in the Park is seeking funding in support of our 40th Anniversary.

Established in 1985, our mission is to produce bold, re-imagined, entertaining, and accessible interpretations of Shakespeare and the classics. We are committed to promoting the highest level of artistic excellence, to cultivating the widest possible audience, and to contributing to the economic and cultural growth of our community, state, and region through the professional theatre experience and educational outreach programs.

We offer year-round programming from our home in the historic Paseo Arts District. Outdoor performances are staged in the 200-seat Shakespeare Gardens, with indoor performances in the 55-seat Black Box Theatre. Educational outreach includes student matinees, touring performances, artist-in-residence training, and youth training camps.

The 2024 season is a celebration of Shakespeare's work, and of who we are as a company: *"This year we honor the artists, technicians, patrons, volunteers, and staff that have sustained us through the years. We are inspired to reach for broader things, to grow and give back to our community, and we are incredibly grateful to be here through these difficult times to keep the legacy of Shakespeare and the classics alive in Oklahoma."* - Founding Artistic Director, Kathryn McGill

EDUCATION SPONSORSHIP OPPORTUNITIES

Individual and corporate sponsors will be listed on the program.

- **\$1,000 ~ GLOBE THEATRE SPONSOR LEVEL**
 - A gift of \$1,000 will cover a portion of our operations for the camp which will allow us to focus on our mission - to educate and entertain.
- **\$500 ~ GOVERNESS SPONSOR LEVEL**
 - A gift of \$500 will help sponsor multiple students for the duration of the camp. This will allow multiple students to attend at no personal cost to their families and still be able to enjoy lesson plan created by our camp director.
- **\$250 ~ STUDENT SPONSOR LEVEL**
 - A gift of \$250 will allow you to sponsor a student for the duration of the camp. This will allow the student to attend at no personal cost to their family and still be able to enjoy lesson plan created by our camp director.
- **\$100 ~ KNIGHT SPONSOR LEVEL**
 - A gift of \$100 will allow us to provide students with their personal stage combat equipment. Students will be able to keep their equipment as a memento from their time at the Young Company Theatre Camp.
- **\$50 ~ MERCHANT SPONSOR LEVEL**
 - A gift of \$50 will help contribute to the supplies needed to provide the best educational experience for our students. This donation level will also help us provide students with the snacks and water that they need to keep them going all week.

IMPACT STATEMENT

Since 1985, Oklahoma Shakespeare in the Park has led the community in classical educational outreach for students of all ages, providing numerous opportunities to study, see, and learn from the great works of dramatic literature as they were meant to be presented. . . on stage!

We provide essential access to live performances of classical texts taught in schools and universities across the state. Especially geared towards high school and university students who study the classics, and adults who are passionate about those works, OSP has filled this need in Oklahoma for forty years.

Our indoor Black Box theatre provides intimate interpretations of the classics in a cozy setting, while our Shakespeare Gardens offers more robust performances in a larger outdoor setting. Ticket prices are kept affordable through grant support, and we offer several discounts promoting access to youth and underserved communities through matinees, touring shows, and residencies.

The impact on students studying Shakespeare as both literature and performance is of utmost importance to our vision to become a regional theatre with a national reputation for excellence. We seek to create a home for artists that supports a more vivid and valued cultural community in Oklahoma.

Since 2020, we have renovated two venues and maintained year-round programming, including new works, Oklahoma premieres, and robust educational outreach. Throughout the pandemic, we have maintained operations, safely employing hundreds of artists and entertaining thousands of patrons.

The impact on our community is powerful. Children have grown to adulthood attending performances and educational workshops at Oklahoma Shakespeare in the Park. Many prominent citizens have grown up with the company, including Mayor David Holt, who was a young company member in his youth. Culturally, the impact of classical theatre cannot be overstated, and economically, we support 100 jobs each season, with patron outreach approaching 10,000 people annually.

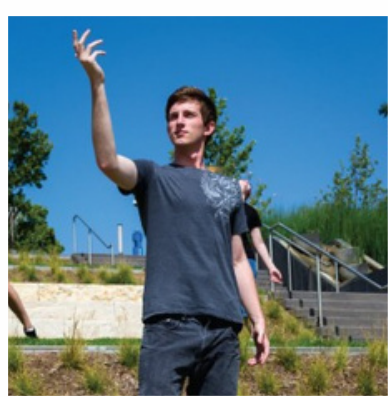
We prioritize steady growth, fiduciary responsibility, and innovative programming. As we enter our 40th season, we look to these principles to guide us into our fifth decade.

PROFESSIONAL AFFILIATIONS AND DESIGNATIONS

- Allied Arts Member Agency
- Member, Shakespeare Theatre Association
- Member, Paseo Arts Association
- Member, Arts Council of Oklahoma City
- A 501(c)3 nonprofit corporation, FEIN 73-1276763

SUPPORT OKLAHOMA SHAKESPEARE

For donation inquiries, please contact: Tyler Woods, Executive Producer, at tyler@okshakes.org or visit our website: www.okshakes.org/donate for further information



**Young Company Theatre Camp
June 24th - June 29th
10 AM - 5 PM**

Students will be learning the fundamentals of classical acting and the full rehearsal process in a week long experience culminating in a performance on our outdoor stage!

Led by Abigail Schmitz, a local theatre artist and educator who has worked across the country as a teaching artist, dramaturg, director, and actor.

[Sign Up or Donate Today](#)

